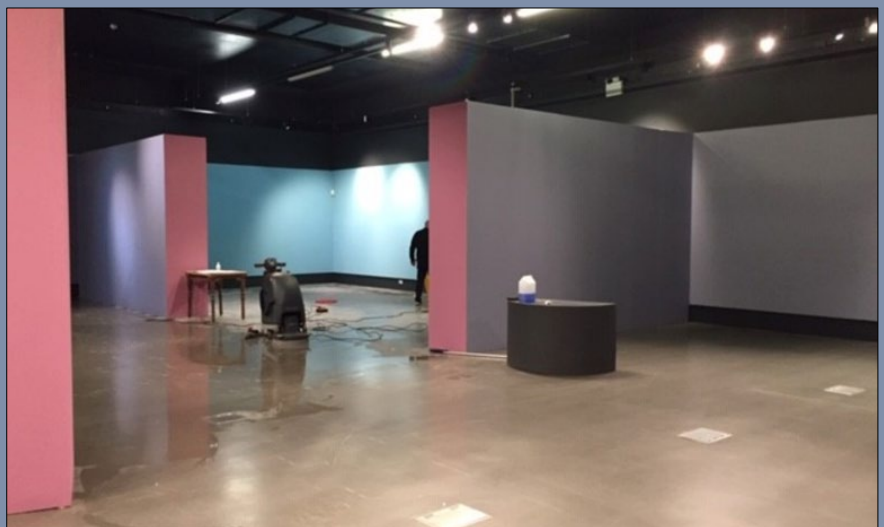


## HMS *Invincible*: The Show Goes On

*The National Museum of the Royal Navy in Portsmouth received the fruits of three full excavation seasons by MAST, in partnership with Bournemouth University and the site licensee, Dan Pascoe. Now that exhibition is on the road and opens in spring in Chatham Historic Dockyard.*



*Some of the many metres of the spare stay moving to its new home in Chatham and the new exhibition space*



*The cutwater before being dismantled*

Now we have dismantled the cutwater into its constituent parts. This took three people seven solid days. It will take up to 20 months now in conservation (PEG of gradually increasing concentrations) to conserve before it is ready for delivery to the NMRN in Portsmouth.

## Maritime Observatory

Last year MAST and OceanMind, a not-for-profit organisation which specialises in the monitoring of illegal, unreported and unregulated fishing for governments and the private sector, joined forces to harness the growing capabilities of the space sector to better protect important maritime sites from unauthorised salvage. It is currently working to protect naval war graves and underwater cultural heritage with European governments.

## Advocacy

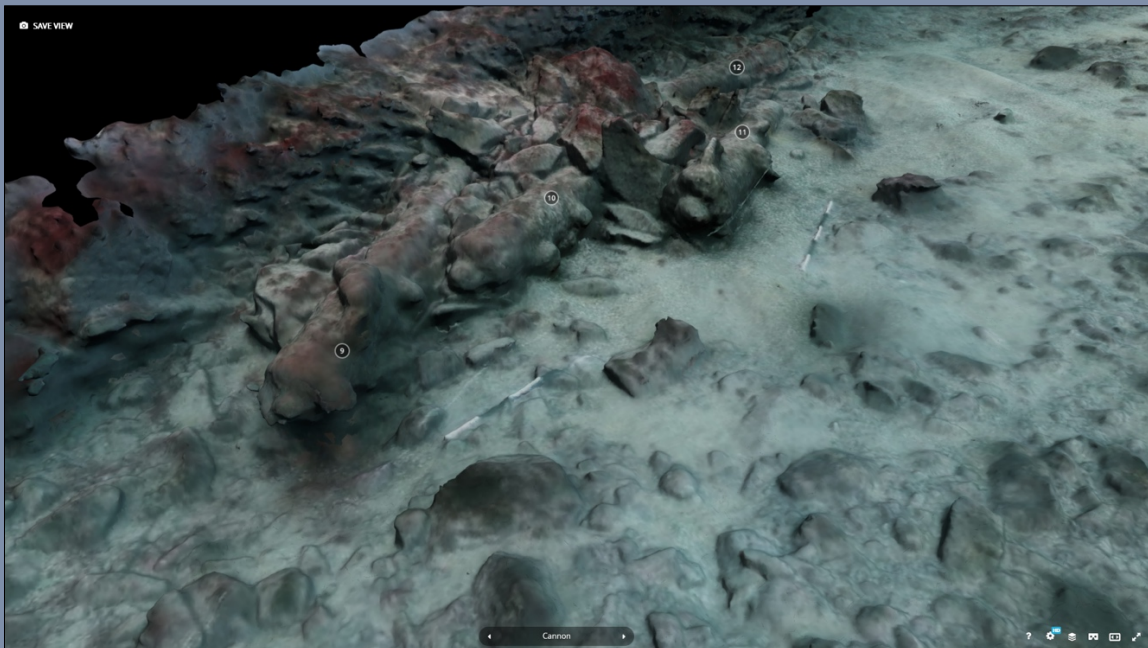
MAST continues to provide advice to British Government departments.

It contributed to a Historic England funded roundtable discussion assessing current training provision and future requirements for PWA licensees and their team members. This was part of the wider project “Protected Wreck Association: Building Capacity for Historic England’s Affiliated Volunteers”.

MAST was an invited participant of the US Naval War College’s international exercise “Cultural Heritage Exploitation in Sub-threshold Operations and Grey Zone Conflict”. This raised awareness of the defence and security implications of cultural heritage and cultural property protection in the maritime domain, and is helping prepare allied forces to counter the increasing exploitation of maritime cultural heritage by adversaries seeking to undermine allied operations.

## Maritime survey

17<sup>th</sup> century protected wreck site, Salcombe: using MAST’s new rib Falcon, MAST, a team from Bournemouth University and South West Maritime Archaeology Group completed a photogrammetric survey of this internationally significant site off the coast of South Devon. This will be used to support a forthcoming publication on site.



*Photogrammetry survey of the Salcombe site. This can also be seen in greater detail [here](#).*

## COVID stops play

Due to the COVID pandemic MAST and its partners have been unable to conduct much fieldwork in 2021 beyond certain small, ongoing projects and have had to put most on hold. However, our team is still attending important sector meetings, some face-to-face and progressing international virtual outreach. We hope to resume normal services soon.

Contact: [mast@thisismast.org](mailto:mast@thisismast.org)

Follow us on Twitter or Facebook @MastArchaeology

