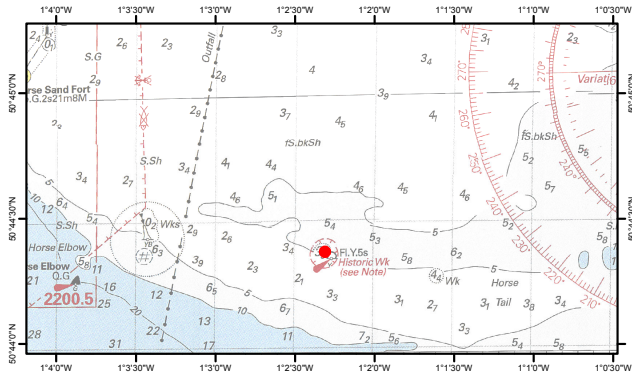


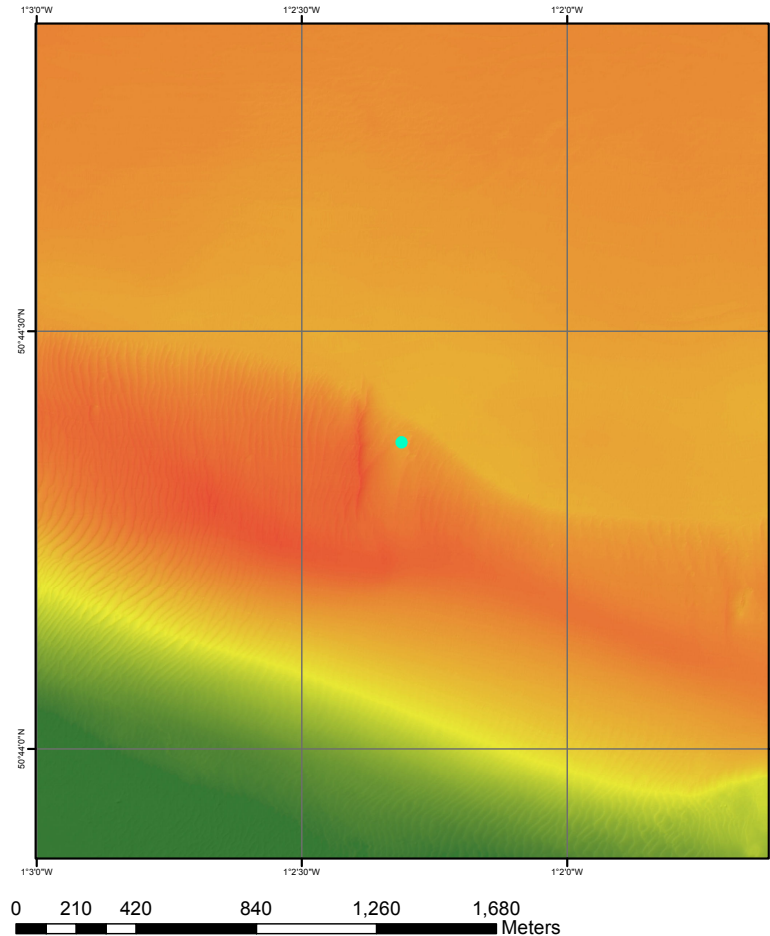
Enclosure 1

Historical charts and bathymetry showing the erosion on the site. The image shows the site within the shifting sands. As it is so shallow in the northern edge it is susceptible to rapid erosion.

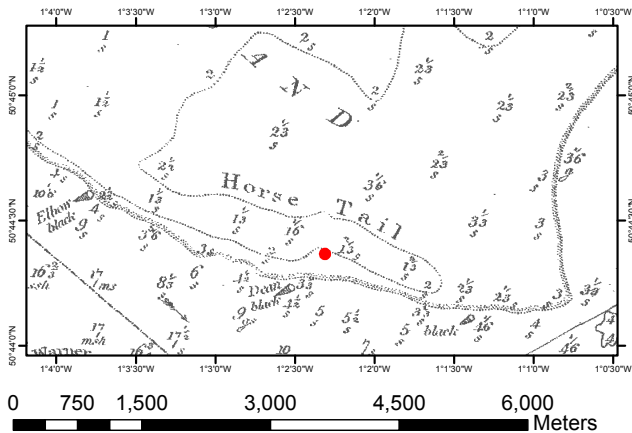
2013 Imray nautical chart



2013 Channel Coastal Observatory multibeam bathymetry



1786 Murdoch Mackenzie nautical chart



Geodetic information
 Coordinate System: WGS 1984 World Mercator
 Projection: Mercator
 Datum: WGS 1984
 False Easting: 0.0000
 False Northing: 0.0000
 Central Meridian: 0.0000
 Standard Parallel 1: 0.0000
 Units: Meter

Figure 2. Geo-referenced cartographic data tracking the movement of Horse Tail Sands in relation to the position of Invincible.

Multibeam bathymetry courtesy of Channel Coastal Observatory.